

FORMULA ASIA VIETNAM CO., LTD

GAS DETECTION SYSTEM AND SAFETY PRODUCTS

ELECTRIC DRIVES AND CONTROLS

POWER TRANSMISSION PRODUCTS AND INDUSTRY SOLUTION





FORMULA ASIA VIETNAM CO., LTD.

We are authorized distributors of fire & gas detection systems, fire protection systems, security systems, safety equipments and components. Continually our makers expanding their capabilities through proactive research and product development, we provide our customers with effective total solutions for residential, commercial, industrial, and institutional buildings

We supply a wide range of sprinklers, alarm valves and accessories as well as CPVC pipe & fittings, flow meters, general purpose valves, hydrants, couplings and grooved fittings, sprinkler support materials, foam products and hardware.

Almost products can either be supplied directly from stock or vert short notice. If required, products can be engraved, assembled or otherwise modified according to your own specifications.

We can assist you to find safe and efficient solutions when using our products. We can provide technical support, training and courses for anyone who installs our products on a regular or project basis.

For the latest information about our organization, product approvals or innovations, please visit us at www.formula.com.vn

Industries Served

- ⌘ Aggregates
- ⌘ Agriculture
- ⌘ Air handing
- ⌘ Automotive
- ⌘ Cement
- ⌘ Chemical
- ⌘ Energy
- ⌘ Food & Beverage
- ⌘ Forest products
- ⌘ Marine
- ⌘ Metal processing
- ⌘ Mining
- ⌘ Petrochemical
- ⌘ Power generation
- ⌘ Wastewater treatment

MAJOR CUSTOMERS





Polytron 7000

The Dräger Polytron 7000 gas detector can satisfy all toxic gas and oxygen measurement applications on a single platform. It meets compliance requirements, as well as the high specification requirements of customized solutions.

- ⌘ Intuitive operation
- ⌘ Intelligent sensors
- ⌘ Communication interfaces: 4 to 20 mA signal, HART®, LON, PROFIBUS® or FOUNDATION Fieldbus™
- ⌘ Robust enclosure: IP66/67, SIL 2
- ⌘ Option: Software, Relay, Pump...



Polytron 8100

The Polytron 8100 EC is Dräger's top of the line explosion-proof transmitter for the detection of toxic gases or oxygen. It uses a high performance plug and play electrochemical DrägerSensor® to detect a specific gas. Besides having a 3-wire 4 to 20 mA analogue output with relays, it also offers Modbus and Fieldbus protocol making it compatible with most control systems.

- ⌘ Durable, intelligent and sensitive – the DrägerSensor.
- ⌘ Easy device management via digital communication.
- ⌘ Same design, same operating principle.
- ⌘ Three relays for controlling external equipment.
- ⌘ Safe, robust housing for every application.
- ⌘ Remote sensor option does not require conduit.
- ⌘ More functions through dongles.

NON- EXPLOSION PROOF AREA



Polytron 2000



Polytron 3000



VarioGard



PointGard 2100

EXPLOSION PROOF AREA



Polytron 5100



Polytron 5720 CO2



Polytron 8720 CO2



PIR 7200 CO2



PIR 7000

- ⌘ Configurable gas library.
- ⌘ Precise and stable measurement.
- ⌘ Fastest response of less than 1 second.
- ⌘ Long maintenance intervals.
- ⌘ Single cable multidrop capability using HART® communication.
- ⌘ Conventional 4-to-20-mA analogue signal output.
- ⌘ SS 316L enclosure.
- ⌘ No moving parts.
- ⌘ SIL 2, ATEX, IECEx, UL, CSA.
- ⌘ Dust approval for zone 21 and 22.
- ⌘ Typical lifetime greater than 15 years.



Polytron 8700

- ⌘ Efficient, stable and robust – the Dräger PIR 7000.
- ⌘ Easy device management via digital communication.
- ⌘ Same design, same operating principle.
- ⌘ Three relays for controlling external equipment.
- ⌘ Safe, robust housing for every application.
- ⌘ Make the impossible possible with the remote sensor.
- ⌘ Data logger.



Polytron 8200

- ⌘ Fast and stable – the DrägerSensor Ex ... DD.
- ⌘ Easy device management via digital communication.
- ⌘ Same design, same operating principle.
- ⌘ Three relays for controlling external equipment.
- ⌘ Safe, robust housing for every application.
- ⌘ Make the impossible possible with the remote sensor.
- ⌘ Data logger.

RELATED PRODUCTS



PIR 3000



PEX 3000



VarioGard



PointGard 2200



Polytron 5200



Polytron 5310



Polytron 5700



Polytron 8310

WIRELESS & FLAME DETECTORS



FLAME DETECTOR



Flame 5000
Digital image processing



Flame 2500 UV



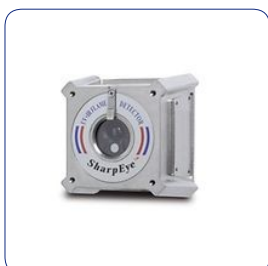
Flame 2350 UV/IR



Flame 2500 IR3



Spectrex 20/20 MI IR3



Spectrex 20/20ML UV/IR



Spectrex 40/40R Single IR



Spectrex 40/40I IR3

GAS DETECTOR



Ultrasonic Gas Detector



Polytron 6100 EC
(Toxic)



GS 01
(Flammable Gas)



Pulsar 7000
(Open Path Gas detector)

FIRE DETECTION



Smoke Detector



Heat Detector



Controller



Gaseous Extinguishing



Regard 3900 / 3910 / 3920

Dräger REGARD® 3900 series can be used as standalone controllers. You can configure up to 16 measuring channels.

- ⌘ Input modules can connect up to four 4 to 20 mA transmitters with 2 or 3-core cables to an input module.
- ⌘ Configuration quickly and easily with the configuration software Config 3900 via laptop or PC.
- ⌘ The robust housing, IP 65
- ⌘ Can be installed in safe area, wall or cabinet.
- ⌘ Gateway solution.



Regard-1 (1 channel)



Regard 2400 / 2410
(4 channel)



Regard 7000



VarioGard Controller

Drägersensor



Electrochemical Sensor



Catalytic Bead Sensor



IR Sensor



PIR Sensor



PORTABLE GAS DETECTOR

Dräger

SINGLE GAS



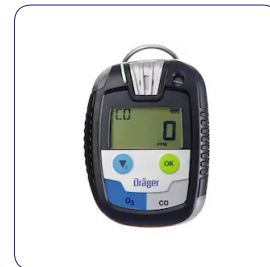
Pac 3500



Pac 6000 / Pac 6500



Pac 8000



Pac 8500

MULTI GAS



X-am 2500



X-am 3500



X-am 5000 / X-am 5600

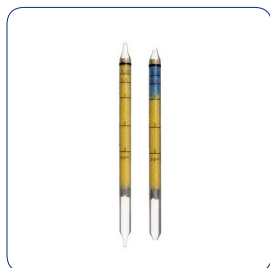


X-am 8000

TUBES



Sampling tubes



Short-term detector tubes



Accuro Pump



Aerotest Alpha

ALCOHOL AND DRUG



Alcotest 5000



Alcotest 6820



Drugcheck 3000



Drugtest 5000

RESPIRATORY PROTECTION



PAS Lite



PSS 3000



X-Plore 1700



X-Plore 4700



X-Plore 3300 / 3500



X-Plore 5500



FPS 7000



Rd 40 Filter



Compressed Air Breathing Cylinders



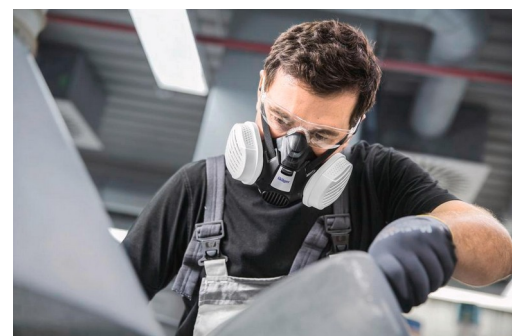
PAS AirPack 1



X-Plore 8000



X-Plore 8000 Hood



SAFETY EQUIPMENTS



SUITS



SPC 3800



CPS 5800



CPS 6900



CPS 7800

HEAD AND EYE PROTECTION



HPS 3500 Helmet



HPS 4500 Helmet



HPS 7000 Helmet



X-pect 8500



X-pect 8200/8300

RESCUE & ESCAPE



Saver PP



Saver CF



PARAT 3100 / 3200



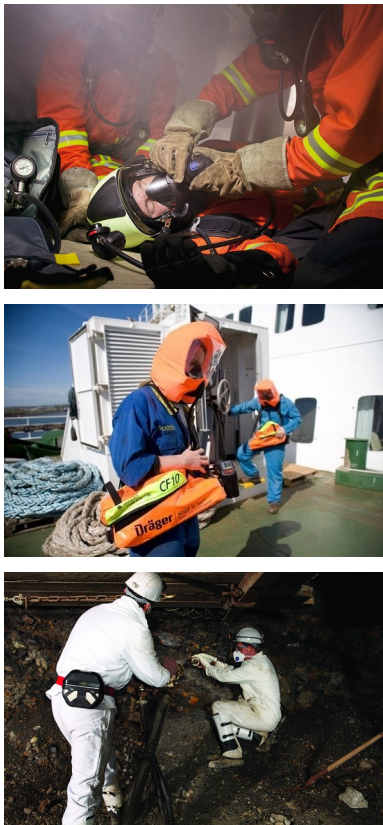
PARAT 5550 Hood



PARAT 4700 / 7500 Hood

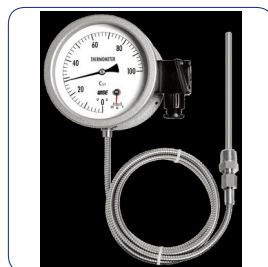


Oxy 3000/6000

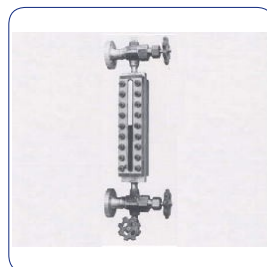




Pressure Gauge



Temperature Meter



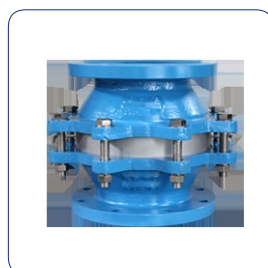
Flow / Level Meter



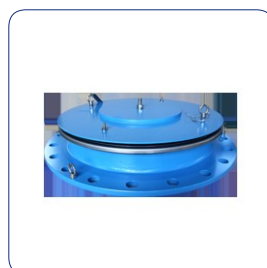
Solenoid Valve



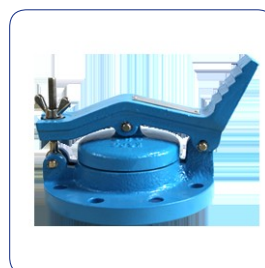
Breather Valve



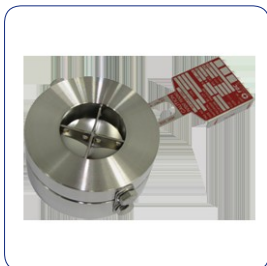
Flame Arrestor



Emergency Vent Cover



Gauge Hatch Cover



Rupture Disk & Explosion Panel



Blanketing Valve



Pilot Operated P/V Valve



Bottom Drain Stem Valve

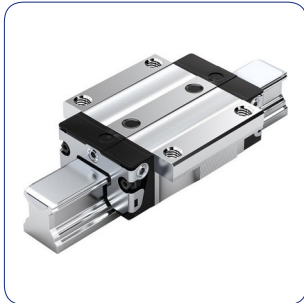
SMART TRANSMITTER



Pressure ♦ Flow ♦ Temperature ♦ Level ♦ Indicator

Since 1989 ♦ High Accuracy $\pm 0.04\%$ ♦ 4 to 20 mA ♦ Digital signal HART ♦ SIL 2, ATEX, Ex d ♦ IP 66/67
Application: Steam ♦ Oil & Gas (Upstream, Downstream) ♦ PetroChemical ♦ Sticky Liquid ♦ High Static Pressure ♦ Oxygen ♦ Hydrogen ♦ Chlorine ♦ Water Treatment ♦ Marine & Offshore...

LINEAR MOTION TECHNOLOGY



Linear guides



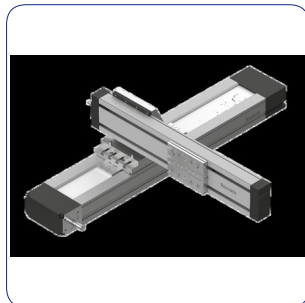
Linear Bushings & Shafts



Linear Screw Assemblies



Linear axes and
electromechanical cylinders



Handling Systems



ELECTRIC DRIVE AND CONTROLS



Servo Drives



Frequency Converters



Motors and Gearboxes



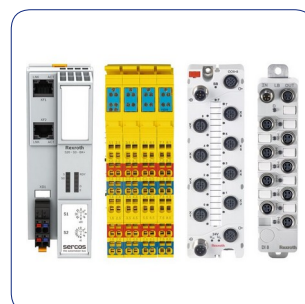
Mobile Hydraulics
& Electronics



Industrial PC and
Operator panels



Embedded Controls



I/O



Industrial Hydraulics



COUPLING

ELASTOMERIC COUPLING



Omega Coupling



Viva Coupling



Wraflex Coupling



Jaw Coupling



Bowex Gear Coupling



Elastomeric Gear Coupling



Pin Coupling



Quick Coupling

DISC COUPLING

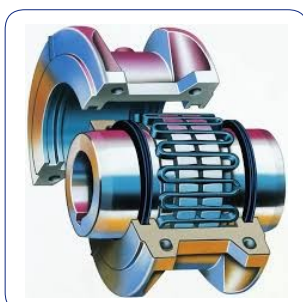


Thomas Disc Coupling



Addax Coupling

GRID COUPLING



Steelflex Coupling



FALK LTG Grease

GEAR COUPLING

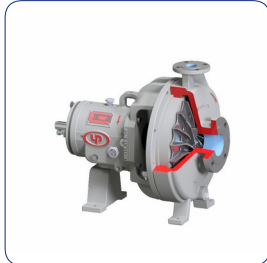


Falk LifeLign Coupling

PUMP



APX Standard Pump



High Flow Pump



Self-Priming Pump



Vortex Pump



Gear Pump



Vertical Pump



Blower



PTFE Liner Pump

VALVE



Control Valve



Pressure Reducing Valve



Ball Valve



Diaphragm Valve



Safety Valve



Check Valve



Butterfly Valve



Plastic Valve

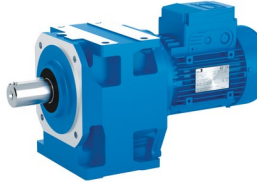


POWER TRANSMISSION PRODUCTS

GEARBOX / GEARMOTOR



Shaft Mount Gearbox



Concentric Inline Gearmotor



Planetgear Gearbox



Parallel Gearbox



Right Angle Gearmotor



Right Angle Gearbox



BEARING



INDUSTRIAL CHAIN





CÔNG TY TNHH MTV CÔNG THỨC CHÂU Á VIỆT NAM
FORMULA ASIA VIETNAM CO., LTD

HEAD OFFICE | TRỤ SỞ CHÍNH

Số 1, Đường số 4, KDC Tân Thành Lập, Khu Phố 2,
 Phường Phú Mỹ, Quận 7, TP. Hồ Chí Minh, Việt
 Nam.

Tel : + 84 (28) 62983 153

+ 84 (28) 62983 156

Fax : + 84 (28) 62983 151

Email : info@formula.com.vn

Website: www.formula.com.vn

HA NOI OFFICE / VPĐD HÀ NỘI

P.801, Tòa nhà CT4, Khu đô thị Eco Green City.

286 Nguyễn Xiển, Quận Thanh Trì, TP. Hà Nội, Việt
 Nam.

BÌNH DƯƠNG OFFICE / VPĐD BÌNH DƯƠNG

Đường D1, SUNCASA Central, Phường Vĩnh Tân,
 Thị xã Tân Uyên, Tỉnh Bình Dương